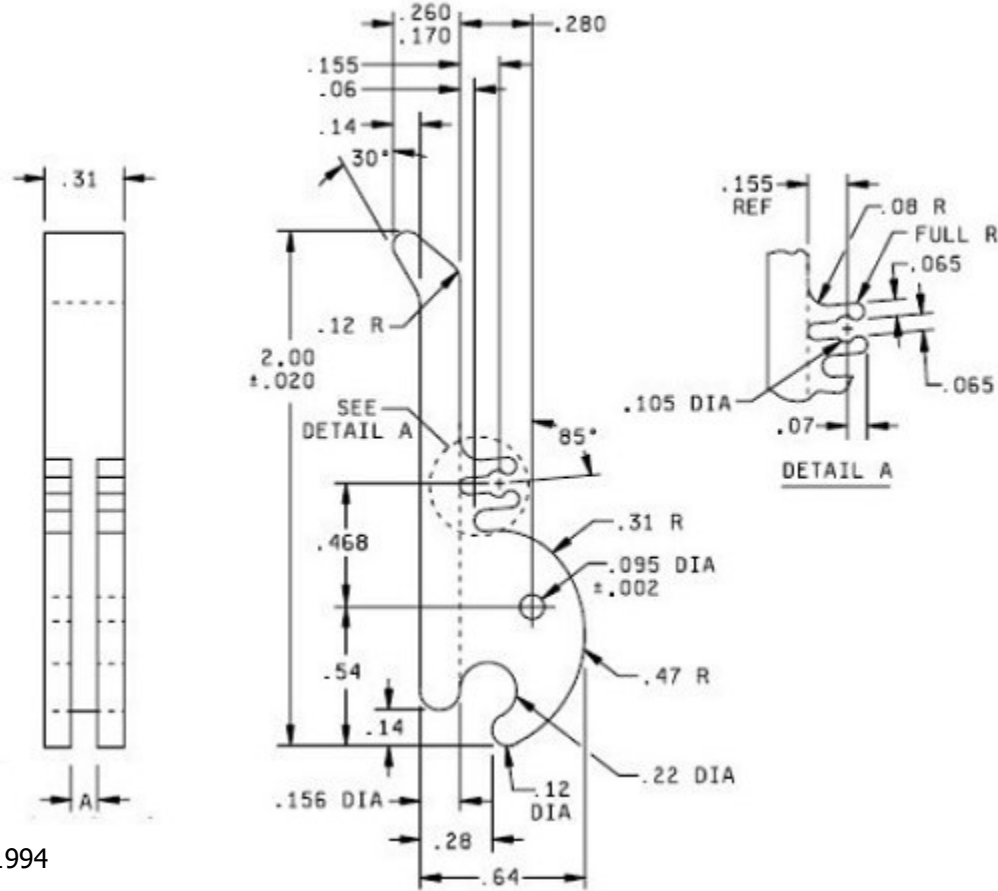



This drawing and the information contained herein are the confidential and proprietary property of Global Supply LLC

9872A 1/16" (1.59 mm) CARD  
 9872B 3/32" (2.38 mm) CARD  
 9872C 1/8" (3.20 mm) CARD



**NOTES:**

1. INTERPRET DRAWING PER ASME Y14.5M-1994
2. ROHS AND REACH COMPLIANT

<b>DRAWING SCALE:</b>		<b>MATERIAL:</b>	<b>DESCRIPTION:</b>
<b>STANDARD</b>		<b>NYLON</b>	<b>PCB EJECTOR</b>
<b>TOLERANCES:</b> <i>Unless specified otherwise, all dimensions are in inches</i>	x.xxx +/- 0.005 x.xx +/- 0.010 x.x +/- 0.010	<b>FINISH:</b>	<b>PART NUMBER:</b>
		<b>NONE</b>	<b>9872X</b>
<b>DRAWN BY:</b>	<b>L. CLARY</b>		 <b>Global Supply LLC</b> WORLDWIDE SUPPLIER OF ELECTRONIC HARDWARE, FASTENERS & COMPONENTS <small>500 Division Street, Campbell, CA 95008-6906          Tel: 408 960 0370 Fax: 408 960 0375 Web: www.globalsupply.com</small>
<b>REV:</b>	<b>APPROVAL</b>	<b>DATE:</b>	
<b>INITIAL REV</b>	<b>LJA</b>	<b>Mar 12, 2019</b>	
<b>FCSM No.</b> <b>67012</b> <b>ECCN</b> <b>EAR99 = NLR (No License Required)</b>			