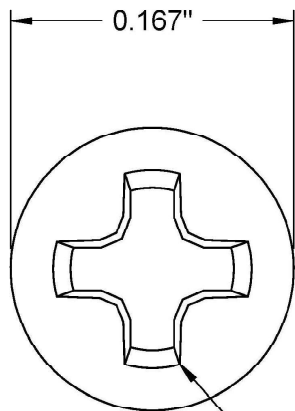
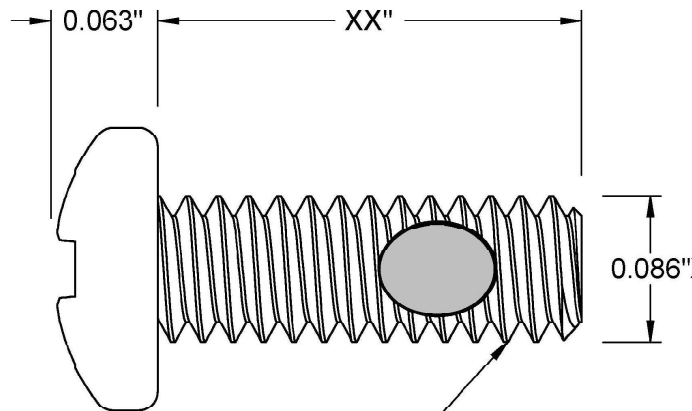


This drawing and the information contained herein are the confidential and proprietary property of Global Supply LLC

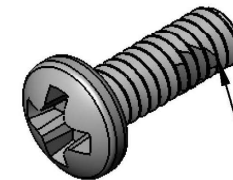


#1 Drive




#2-56 Thread

PART NUMBER	LENGTH
2C8MPPSP/SPA	1/8
2C10MPPSP/SPA	5/32
2C12MPPSP/SPA	3/16
2C16MPPSP/SPA	1/4
2C20MPPSP/SPA	5/16
2C24MPPSP/SPA	3/8
2C28MPPSP/SPA	7/16
2C32MPPSP/SPA	1/2
2C40MPPSP/SPA	5/8
2C44MPPSP/SPA	11/16
2C48MPPSP/SPA	3/4
2C52MPPSP/SPA	13/16
2C56MPPSP/SPA	7/8



Nylon Anti-Vibration Patch

1. INTERPRET DRAWING PER ASME Y14.5M-1994
2. DIMENSIONS & TOLERANCES PER ANSI/ASME B18.6.3
3. SELF-LOCKING ELEMENT PATCH INTERPRET PER MIL-DTL-18240
4. ROHS AND REACH COMPLIANT

DRAWING SCALE:			MATERIAL:		DESCRIPTION:	
STANDARD			STAINLESS STEEL		2-56 PHILLIPS PAN HEAD MACHINE SCREW W/NYLOK PATCH	
TOLERANCES: <i>Unless specified otherwise, all dimensions are in inches</i>		<div>X.XXX +/- 0.005</div> <div>X.XX +/- 0.010</div> <div>X.X +/- 0.010</div>	FINISH:		PART NUMBER:	
			PASSIVATE		2CXXMPPSP/SPA	
DRAWN BY:		L.CLARY		FSCM No. 67012		<div></div> <div>Global Supply LLC</div> <div>WORLDWIDE SUPPLIER OF ELECTRONIC HARDWARE, FASTENERS & COMPONENTS</div> <div>500 Division Street, Campbell, CA 95008-6906 Tel: 408 960 0370 Fax: 408 960 0375 Web: www.globalsupply.com</div>
REV:		APPROVAL	DATE:			
INITIAL RELEASE		LJA	Apr 9, 2018	ECCN EAR99 = NLR (No License Required)		