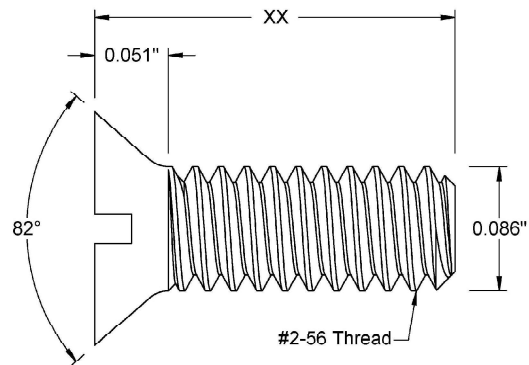
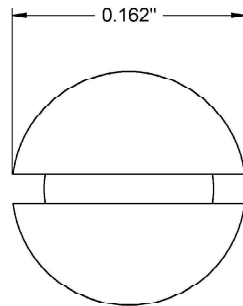



This drawing and the information contained herein are the confidential and proprietary property of Global Supply LLC



PART NUMBER	LENGTH
2C8MI82Z	1/8
2C12MI82Z	3/16
2C16MI82Z	1/4
2C20MI82Z	5/16
2C24MI82Z	3/8
2C28MI82Z	7/16
2C32MI82Z	1/2
2C36MI82Z	9/16
2C48MI82Z	3/4
2C56MI82Z	7/8
2C64MI82Z	1

NOTES:

1. INTERPRET DRAWINGS PER ASME Y14.5M-1994 STANDARD.
2. DIMENSIONS & TOLERANCES PER ANSI/ASME B18.6.3

DRAWING SCALE:			MATERIAL:		DESCRIPTION:	
STANDARD			STEEL		#2-56 FLAT SLOT 82° HEAD MACHINE SCREW	
TOLERANCES: <i>Unless specified otherwise, all dimensions are in inches</i>		x.xxx +/- 0.005 x.xx +/- 0.010 x.x +/- 0.010	FINISH:		PART NUMBER:	
			ZINC I		2CXXMI82Z	
DRAWN BY:		L.CLARY		FSCM No. 67012		 Global Supply LLC WORLDWIDE SUPPLIER OF ELECTRONIC HARDWARE, FASTENERS & COMPONENTS <small>500 Division Street, Campbell, CA 95008-6906 Tel: 408 960 0370 Fax: 408 960 0375 Web: www.globalsupply.com</small>
REV:		APPROVAL	DATE:			
INITIAL RELEASE		LJA	Apr 5, 2018	ECCN EAR99 = NLR (No License Required)		