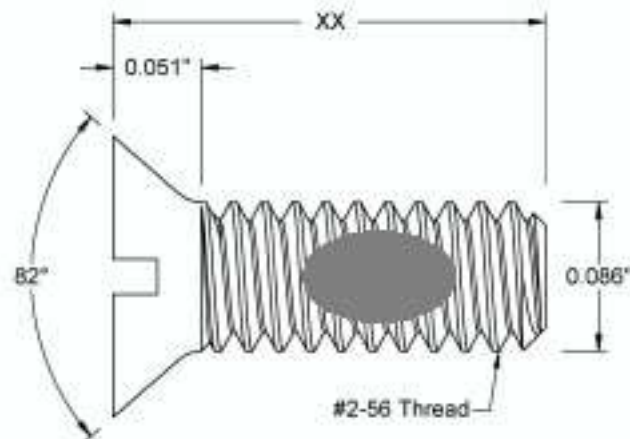
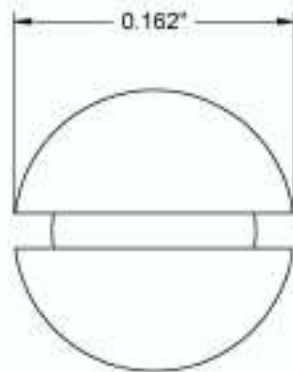



This drawing and the information contained herein are the confidential and proprietary property of Global Supply LLC



PART NUMBER	LENGTH
2C8MI82O/SPA	1/8
2C12MI82O/SPA	3/16
2C16MI82O/SPA	1/4
2C20MI82O/SPA	5/16
2C24MI82O/SPA	3/8
2C28MI82O/SPA	7/16
2C32MI82O/SPA	1/2
2C36MI82O/SPA	9/16
2C48MI82O/SPA	3/4
2C56MI82O/SPA	7/8
2C64MI82O/SPA	1

NOTES:

1. INTERPRET DRAWINGS PER ASME Y14.5M-1994 STANDARD.
2. DIMENSIONS & TOLERANCES PER ANSI/ASME B18.6.3
3. ROHS AND REACH COMPLIANT

DRAWING SCALE:			MATERIAL:		DESCRIPTION:	
STANDARD			STEEL		#2-56 FLAT SLOT 82° HEAD MACHINE SCREW, PATCHED	
TOLERANCES: <i>Unless specified otherwise, all dimensions are in inches</i>		x.xxx +/- 0.005 x.xx +/- 0.010 x.x +/- 0.010		FINISH:		PART NUMBER:
				BLACK OXIDE		2CXXMI82O/SPA
DRAWN BY:		L.CLARY		FSCM No.		<div><div>Global Supply LLC</div><div>WORLDWIDE SUPPLIER OF ELECTRONIC HARDWARE, FASTENERS & COMPONENTS</div><div>500 Division Street, Campbell, CA 95008-6906 Tel: 408 960 0370 Fax: 408 960 0375 Web: www.globalsupply.com</div></div>
REV:		APPROVAL		DATE:		
INITIAL RELEASE		LJA		Jul 30, 2018		
				ECCN		
				EAR99 = NLR (No License Required)		