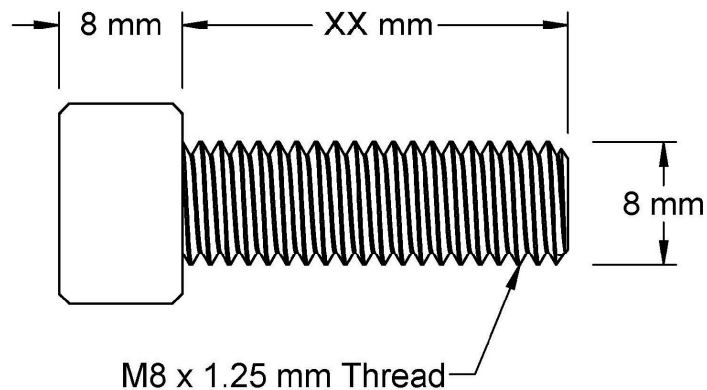
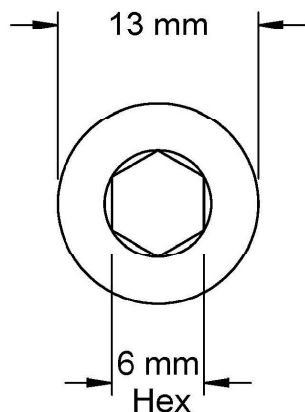
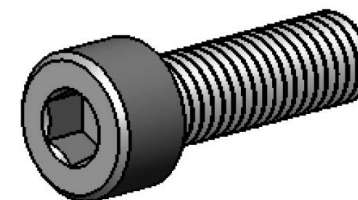



This drawing and the information contained herein are the confidential and proprietary property of Global Supply LLC



PART NUMBER	LENGTH
.80C80SCSSP	8 mm
.80C100SCSSP	10 mm
.80C120SCSSP	12 mm
.80C140SCSSP	14 mm
.80C160SCSSP	16 mm
.80C180SCSSP	18 mm
.80C200SCSSP	20 mm
.80C220SCSSP	22 mm
.80C250SCSSP	25 mm
.80C280SCSSP	28 mm



NOTES:
 1. INTERPRET DRAWINGS PER DIN 912 STANDARD.
 2. DIMENSIONS & TOLERANCES PER ANSI/ASME B18.3.1M
 3. ROHS AND REACH COMPLIANT

DRAWING SCALE: METRIC			MATERIAL: STAINLESS STEEL	DESCRIPTION: M8 x 1.25 SOCKET HEAD CAP SCREW
TOLERANCES: <i>Unless specified otherwise, all dimensions are in millimeters</i>		x.xxx +/- 0.100 x.xx +/- 0.100 x.x +/- 0.100	FINISH: PASSIVATE	PART NUMBER: .80CXXSCSSP
DRAWN BY:	LJA		FSCM No. 67012	<div><div>Global Supply LLC WORLDWIDE SUPPLIER OF ELECTRONIC HARDWARE, FASTENERS & COMPONENTS <small>500 Division Street, Campbell, CA 95008-6906 Tel: 408 960 0370 Fax: 408 960 0375 Web: www.globalsupply.com</small></div></div>
REV:	APPROVAL	DATE:		
INITIAL RELEASE	LJA	Jan 3, 2017		
A	LJA	Jun 6, 2018		
			ECCN EAR99 = NLR (No License Required)	