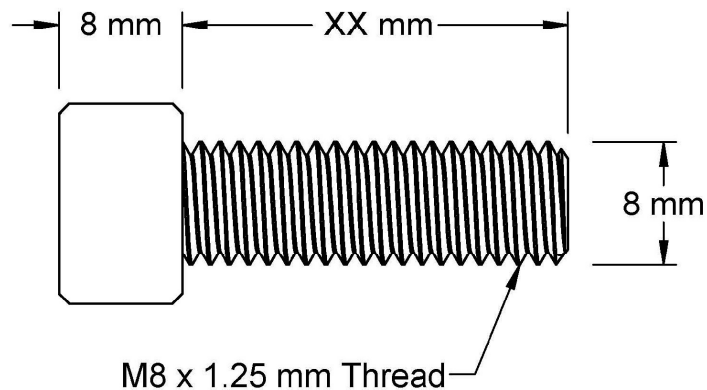
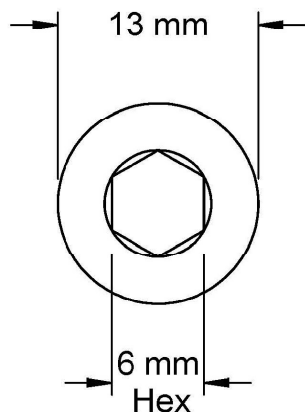
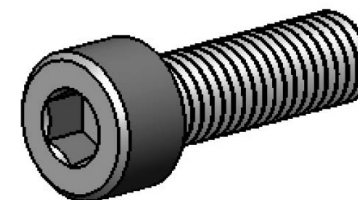



This drawing and the information contained herein are the confidential and proprietary property of Global Supply LLC



PART NUMBER	LENGTH
.80C80SCSSP/FT	8mm
.80C100SCSSP/FT	10 mm
.80C200SCSSP/FT	20 mm
.80C300SCSSP/FT	30 mm
.80C400SCSSP/FT	40 mm
.80C450SCSSP/FT	45 mm
.80C500SCSSP/FT	50 mm
.80C550SCSSP/FT	55 mm
.80C600SCSSP/FT	60 mm
.80C700SCSSP/FT	70 mm
.80C800SCSSP/FT	80 mm
.80C900SCSSP/FT	90 mm
.80C1000SCSSP/FT	100 mm



NOTES:
 1. INTERPRET DRAWINGS PER DIN 912 STANDARD.
 2. DIMENSIONS AND TOLERANCES PER ANSI/ASME B18.3.1M
 3. ROHS AND REACH COMPLIANT

DRAWING SCALE:			MATERIAL:		DESCRIPTION:		
METRIC			STAINLESS STEEL		M8 x 1.25 SOCKET HEAD CAP SCREW, FULL THREAD		
TOLERANCES: <i>Unless specified otherwise, all dimensions are in millimeters</i>		X.XXX +/- 0.100 X.XX +/- 0.100 X.X +/- 0.100		FINISH:		PART NUMBER:	
				PASSIVATE		.80CXXSCSSP/FT	
DRAWN BY:		LJA		FSCM No.		<div><div>Global Supply LLC</div><div>WORLDWIDE SUPPLIER OF ELECTRONIC HARDWARE, FASTENERS & COMPONENTS</div><div>500 Division Street, Campbell, CA 95008-6906 Tel: 408 960 0370 Fax: 408 960 0375 Web: www.globalsupply.com</div></div>	
REV:		APPROVAL		DATE:			
INITIAL RELEASE		LJA		Jun 6, 2018			
				ECCN			
				EAR99 = NLR (No License Required)			