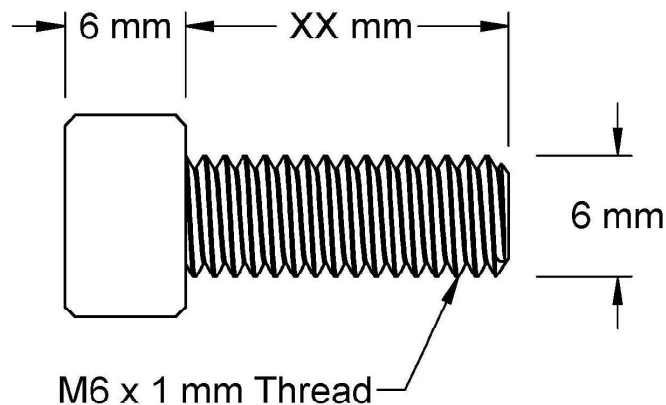
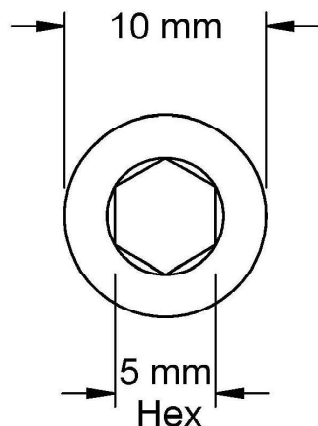
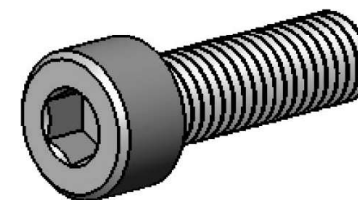



This drawing and the information contained herein are the confidential and proprietary property of Global Supply LLC



PART NUMBER	LENGTH
.60C20SCSSS	2 mm
.60C60SCSSS	6 mm
.60C80SCSSS	8 mm
.60C100SCSSS	10 mm
.60C120SCSSS	12 mm
.60C140SCSSS	14 mm
.60C160SCSSS	16 mm
.60C180SCSSS	18 mm
.60C200SCSSS	20 mm
.60C220SCSSS	22 mm
.60C250SCSSS	25 mm
.60C300SCSSS	30 mm



NOTES:
 1. INTERPRET DRAWINGS PER DIN 912 STANDARD.
 2. DIMENSIONS & TOLERANCES PER ANSI/ASME B18.3.1
 3. ROHS AND REACH COMPLIANT

DRAWING SCALE: METRIC			MATERIAL: STAINLESS STEEL	DESCRIPTION: M6-1.0 SOCKET HEAD CAP SCREW
TOLERANCES: <i>Unless specified otherwise, all dimensions are in millimeters</i>		x.xxx +/- 0.100 x.xx +/- 0.100 x.x +/- 0.100	FINISH: SILVER	PART NUMBER: .60CXXSCSSS
DRAWN BY:	LJA		FSCM No. 67012	<div><div>Global Supply LLC WORLDWIDE SUPPLIER OF ELECTRONIC HARDWARE, FASTENERS & COMPONENTS <small>500 Division Street, Campbell, CA 95008-6906 Tel: 408 960 0370 Fax: 408 960 0375 Web: www.globalsupply.com</small></div></div>
REV:	APPROVAL	DATE:		
INITIAL RELEASE	LJA	Jan 3, 2017		
A	LJA	May 1, 2018		
			ECCN EAR99 = NLR (No License Required)	