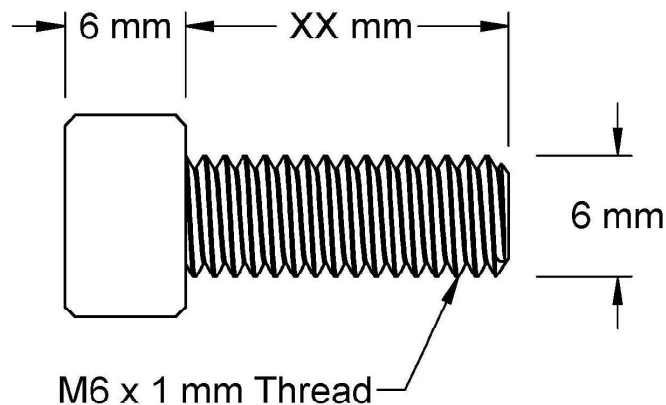
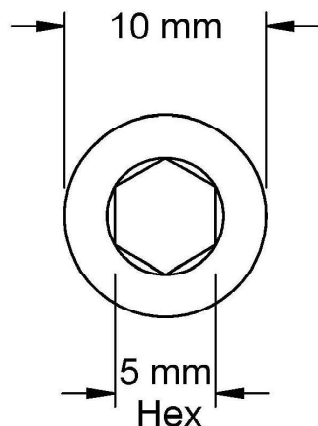
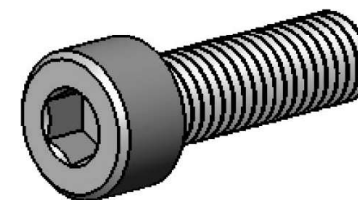



This drawing and the information contained herein are the confidential and proprietary property of Global Supply LLC



PART NUMBER	LENGTH
.60C20SCSSP	2 mm
.60C60SCSSP	6 mm
.60C80SCSSP	8 mm
.60C100SCSSP	10 mm
.60C120SCSSP	12 mm
.60C140SCSSP	14 mm
.60C160SCSSP	16 mm
.60C180SCSSP	18 mm
.60C200SCSSP	20 mm
.60C220SCSSP	22 mm
.60C250SCSSP	25 mm
.60C300SCSSP	30 mm



NOTES:  
 1. INTERPRET DRAWINGS PER DIN 912 STANDARD.  
 2. DIMENSIONS & TOLERANCES PER ANSI/ASME B18.3.1  
 3. ROHS AND REACH COMPLIANT

<b>DRAWING SCALE:</b> <b>METRIC</b>		<b>MATERIAL:</b> <b>STAINLESS STEEL</b>	<b>DESCRIPTION:</b> <b>M6-1.0 SOCKET HEAD CAP SCREW</b>
<b>TOLERANCES:</b> <i>Unless specified otherwise, all dimensions are in millimeters</i>	<b>x.xxx</b> +/- 0.100 <b>x.xx</b> +/- 0.100 <b>x.x</b> +/- 0.100	<b>FINISH:</b> <b>PASSIVATE</b>	<b>PART NUMBER:</b> <b>.60CXXSCSSP</b>
<b>DRAWN BY:</b> LJA	<b>FSCM No.</b> <b>67012</b>		 <b>Global Supply LLC</b> WORLDWIDE SUPPLIER OF ELECTRONIC HARDWARE, FASTENERS & COMPONENTS <small>500 Division Street, Campbell, CA 95008-6906          Tel: 408 960 0370 Fax: 408 960 0375 Web: www.globalsupply.com</small>
<b>REV:</b> INITIAL RELEASE	<b>APPROVAL</b> LJA	<b>DATE:</b> Jan 3, 2017	
<b>A</b>	<b>LJA</b>	<b>May 1, 2018</b>	
<b>ECCN</b> EAR99 = NLR (No License Required)			