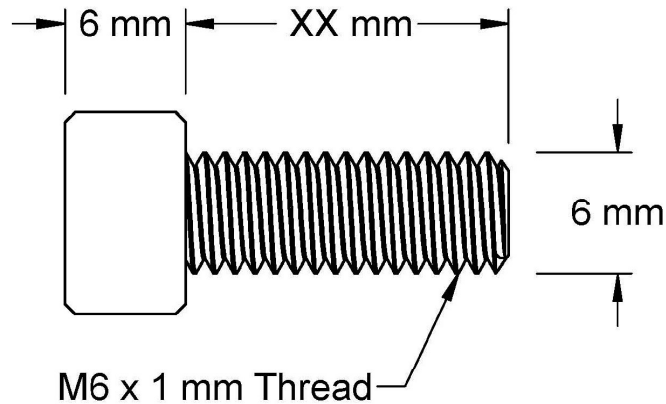
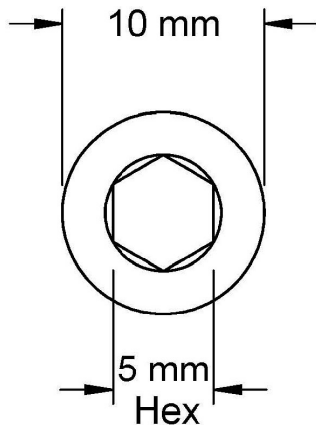
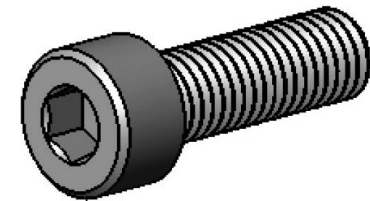


This drawing and the information contained herein are the confidential and proprietary property of Global Supply LLC




PART NUMBER	LENGTH
.60C80SCSSP/FT	8mm
.60C100SCSSP/FT	10mm
.60C200SCSSP/FT	20mm
.60C350SCSSP/FT	35mm
.60C400SCSSP/FT	40mm
.60C450SCSSP/FT	45mm
.60C500SCSSP/FT	50mm
.60C550SCSSP/FT	55mm
.60C600SCSSP/FT	60mm
.60C700SCSSP/FT	70mm
.60C800SCSSP/FT	80mm
.60C900SCSSP/FT	90mm
.60C1000SCSSP/FT	100mm



NOTES:

1. INTERPRET DRAWINGS PER DIN 912 STANDARD.
2. ROHS AND REACH COMPLIANT

DRAWING SCALE:			MATERIAL:		DESCRIPTION:	
METRIC			STAINLESS STEEL		M6-1.0 SOCKET HEAD CAP SCREW FULL THREAD	
TOLERANCES: <i>Unless specified otherwise, all dimensions are in millimeters</i>		x.xxx +/- 0.100 x.xx +/- 0.100 x.x +/- 0.100	FINISH:		PART NUMBER:	
			PASSIVATE		.60CXXSCSSP/FT	
DRAWN BY:		LCLARY		FSCM No.		<div></div> <div>Global Supply LLC WORLDWIDE SUPPLIER OF ELECTRONIC HARDWARE, FASTENERS & COMPONENTS 500 Division Street, Campbell, CA 95008-6906 Tel: 408 960 0370 Fax: 408 960 0375 Web: www.globalsupply.com</div>
REV:		APPROVAL	DATE:	67012		
INITIAL RELEASE		LJA	Apr 3, 2018	ECCN		
				EAR99 = NLR (No License Required)		