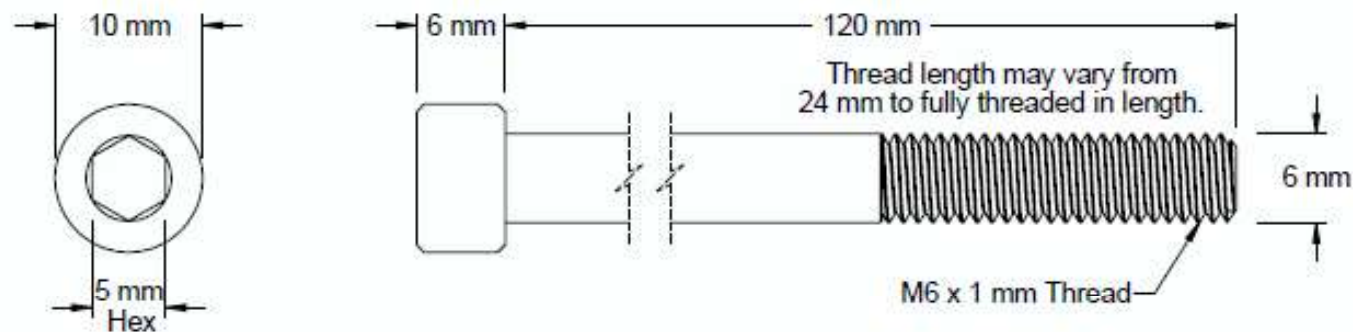


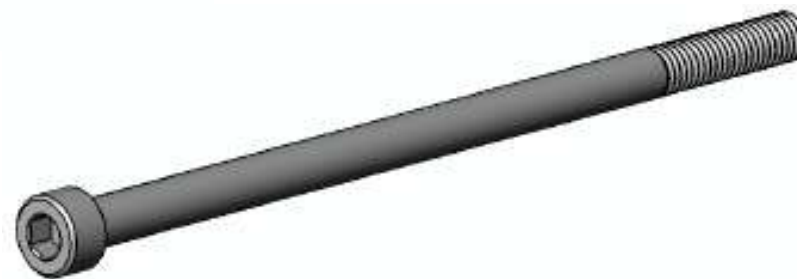
This drawing and the information contained herein are the confidential and proprietary property of Global Supply LLC




PART NUMBER	LENGTH
.60C350SCSSP	35 mm
.60C400SCSSP	40 mm
.60C450SCSSP	45 mm
.60C500SCSSP	50 mm
.60C550SCSSP	55 mm
.60C600SCSSP	60 mm
.60C650SCSSP	65 mm
.60C700SCSSP	70 mm
.60C750SCSSP	75 mm
.60C800SCSSP	80 mm
.60C850SCSSP	85 mm
.60C900SCSSP	90 mm
.60C950SCSSP	95 mm

NOTES:

1. INTERPRET DRAWINGS PER 912 DIN STANDARD.
2. DIMENSIONS & TOLERANCES PER ANSI/ASME B18.3.1
3. ROHS AND REACH COMPLIANT



DRAWING SCALE: METRIC		MATERIAL: STAINLESS STEEL	DESCRIPTION: M6 - 1.0 HEX SOCKET CAP SCREW
TOLERANCES: <i>Unless specified otherwise, all dimensions are in inches</i>	x.xxx +/- 0.005 x.xx +/- 0.010 x.x +/- 0.010	FINISH: PASSIVATE	PART NUMBER: .60CXXSCSSP
DRAWN BY: L.CLARY	FSCM No. 67012		 Global Supply LLC WORLDWIDE SUPPLIER OF ELECTRONIC HARDWARE, FASTENERS & COMPONENTS 500 Division Street, Campbell, CA 95008-6906 Tel: 408 960 0370 Fax: 408 960 0375 Web: www.globalsupply.com
REV: INITIAL RELEASE	APPROVAL A	DATE: Apr 24, 2018	
ECCN EAR99 = NLR (No License Required)			