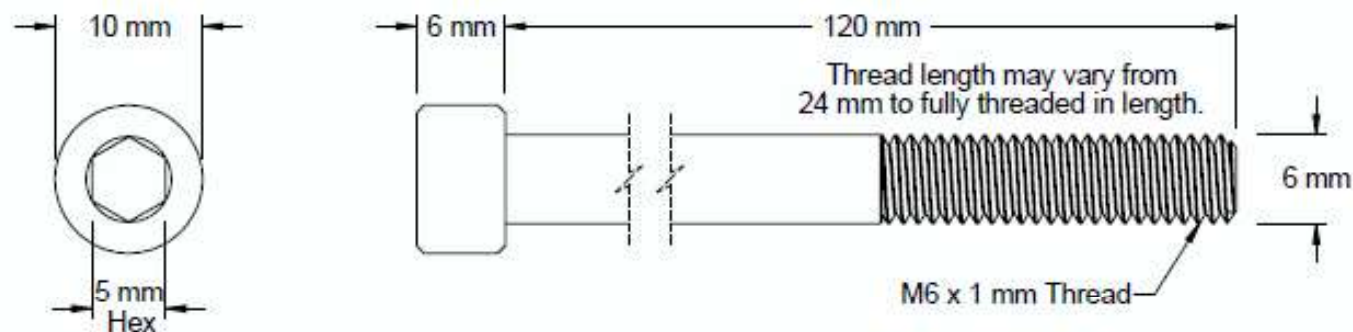
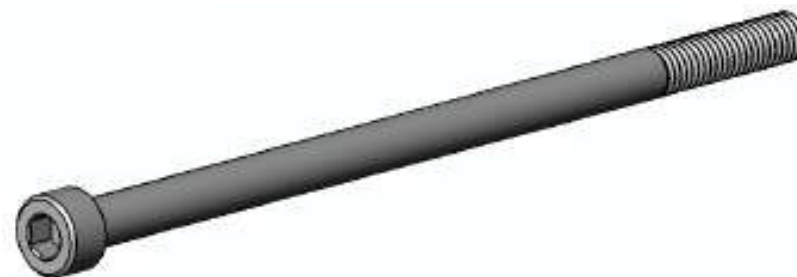



This drawing and the information contained herein are the confidential and proprietary property of Global Supply LLC



PART NUMBER	LENGTH
.60C350SCSHZ	35 mm
.60C400SCSHZ	40 mm
.60C450SCSHZ	45 mm
.60C500SCSHZ	50 mm
.60C550SCSHZ	55 mm
.60C600SCSHZ	60 mm
.60C650SCSHZ	65 mm
.60C700SCSHZ	70 mm
.60C750SCSHZ	75 mm
.60C800SCSHZ	80 mm
.60C850SCSHZ	85 mm
.60C900SCSHZ	90 mm
.60C950SCSHZ	95 mm

- NOTES:
- INTERPRET DRAWINGS PER 912 DIN STANDARD.
 - DIMENSIONS & TOLERANCES PER ANSI/ASME B18.3.1



DRAWING SCALE:			MATERIAL:		DESCRIPTION:	
METRIC			ALLOY STEEL		M6 - 1.0 HEX SOCKET CAP SCREW	
TOLERANCES: <i>Unless specified otherwise, all dimensions are in inches</i>		<div><div>x.xxx</div><div>+/- 0.005</div></div> <div><div>x.xx</div><div>+/- 0.010</div></div> <div><div>x.x</div><div>+/- 0.010</div></div>	FINISH:		PART NUMBER:	
			ZINC I		.60CXXSCSHZ	
DRAWN BY:		L.CLARY		FSCM No.		<div><div>Global Supply <small>LLC</small></div><div>WORLDWIDE SUPPLIER OF ELECTRONIC HARDWARE, FASTENERS & COMPONENTS</div><div><small>500 Division Street, Campbell, CA 95008-6906 Tel: 408 960 0370 Fax: 408 960 0375 Web: www.globalsupply.com</small></div></div>
REV:		APPROVAL	DATE:		67012	
INITIAL RELEASE		A	Apr 30, 2018			
				ECCN		
				EAR99 = NLR (No License Required)		