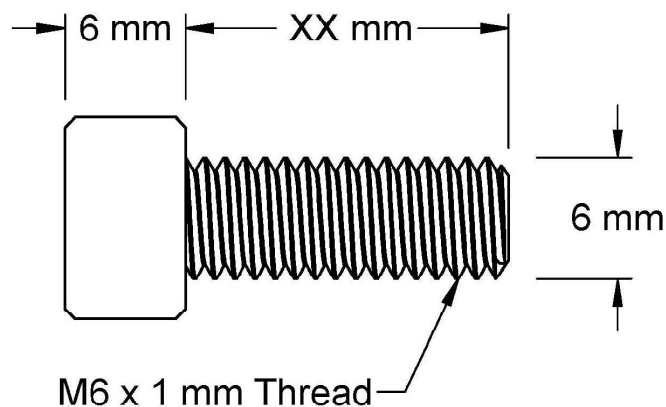
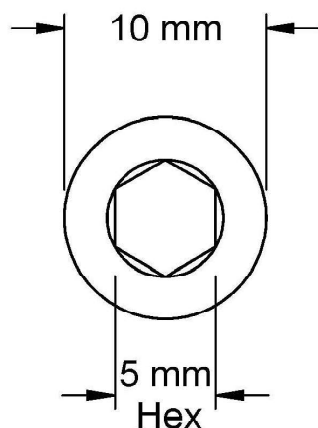
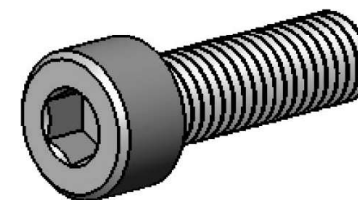



This drawing and the information contained herein are the confidential and proprietary property of Global Supply LLC



PART NUMBER	LENGTH
.60C80SCSHO	8 mm
.60C100SCSHO	10 mm
.60C120SCSHO	12 mm
.60C140SCSHO	14 mm
.60C150SCSHO	15 mm
.60C160SCSHO	16 mm
.60C180SCSHO	18 mm
.60C200SCSHO	20 mm
.60C220SCSHO	22 mm
.60C250SCSHO	25 mm
.60C300SCSHO	30 mm



NOTES:  
 1. INTERPRET DRAWINGS PER DIN 912 STANDARD.  
 2. DIMENSIONS & TOLERANCES PER ANSI/ASME B18.3.1  
 3. ROHS AND REACH COMPLIANT

DRAWING SCALE:  METRIC			MATERIAL:  ALLOY STEEL	DESCRIPTION:  M6-1.0 SOCKET HEAD CAP SCREW
TOLERANCES: <i>Unless specified otherwise, all dimensions are in millimeters</i>		x.xxx +/- 0.100 x.xx +/- 0.100 x.x +/- 0.100	FINISH:  BLACK OXIDE	PART NUMBER:  .60CXXSCSHO
DRAWN BY:	LJA		FSCM No.  67012	<div><div>Global Supply LLC WORLDWIDE SUPPLIER OF ELECTRONIC HARDWARE, FASTENERS &amp; COMPONENTS <small>500 Division Street, Campbell, CA 95008-6906 Tel: 408 960 0370 Fax: 408 960 0375 Web: www.globalsupply.com</small></div></div>
REV:	APPROVAL	DATE:		
INITIAL RELEASE	LJA	Apr 30, 2018		
			ECCN  EAR99 = NLR (No License Required)	