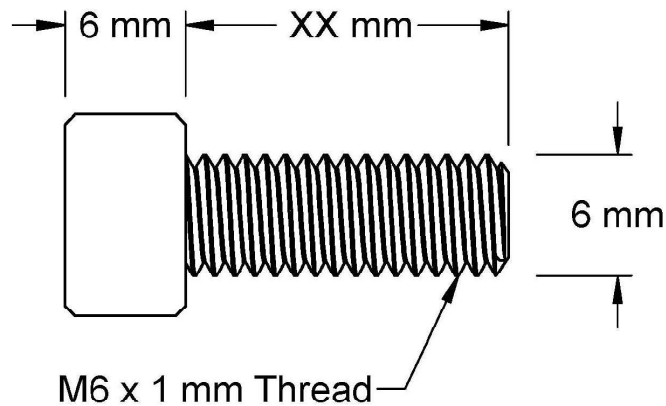
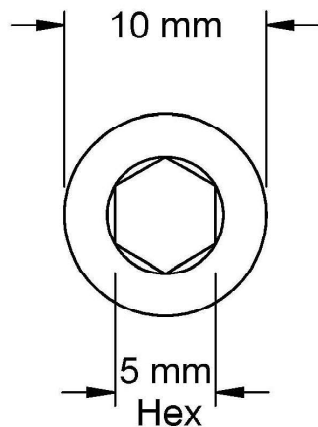
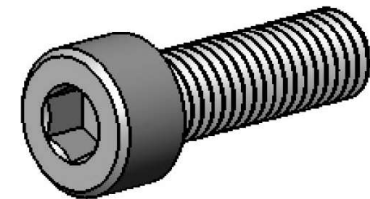


This drawing and the information contained herein are the confidential and proprietary property of Global Supply LLC



PART NUMBER	LENGTH
.60C20SCS8Z	2 mm
.60C100SCS8Z	10 mm
.60C120SCS8Z	12 mm
.60C140SCS8Z	14 mm
.60C150SCS8Z	15 mm
.60C160SCS8Z	16 mm
.60C180SCS8Z	18 mm
.60C200SCS8Z	20 mm
.60C220SCS8Z	22 mm
.60C250SCS8Z	25 mm
.60C300SCS8Z	30 mm



NOTES:
 1. INTERPRET DRAWINGS PER DIN 912 STANDARD.
 2. DIMENSIONS & TOLERANCES PER ANSI/ASME B18.3.1

DRAWING SCALE: METRIC		MATERIAL: GRADE 8 STEEL	DESCRIPTION: M6-1.0 SOCKET HEAD CAP SCREW
TOLERANCES: <i>Unless specified otherwise, all dimensions are in millimeters</i>	x.xxx +/- 0.100 x.xx +/- 0.100 x.x +/- 0.100	FINISH: ZINC I	PART NUMBER: .60CXXSCS8Z
DRAWN BY: LJA	FSCM No. 67012		 Global Supply LLC WORLDWIDE SUPPLIER OF ELECTRONIC HARDWARE, FASTENERS & COMPONENTS <small>500 Division Street, Campbell, CA 95008-6906 Tel: 408 960 0370 Fax: 408 960 0375 Web: www.globalsupply.com</small>
REV: INITIAL RELEASE	APPROVAL LJA	DATE: Apr 30, 2018	
ECCN EAR99 = NLR (No License Required)			