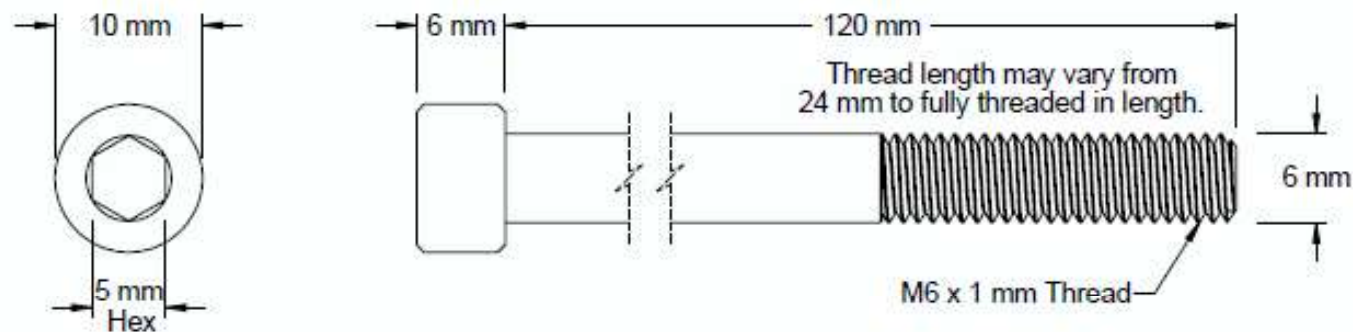


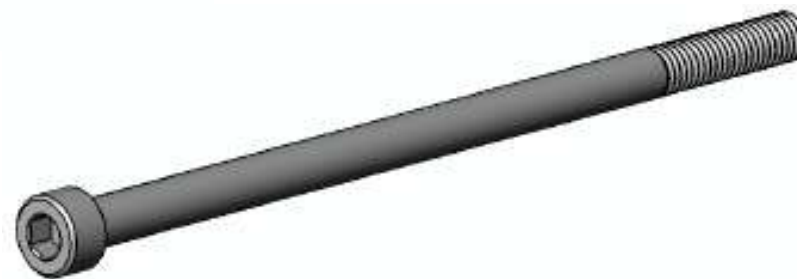
This drawing and the information contained herein are the confidential and proprietary property of Global Supply LLC




PART NUMBER	LENGTH
.60C350SCS1	35 mm
.60C400SCS1	40 mm
.60C450SCS1	45 mm
.60C500SCS1	50 mm
.60C550SCS1	55 mm
.60C600SCS1	60 mm
.60C650SCS1	65 mm
.60C700SCS1	70 mm
.60C750SCS1	75 mm
.60C800SCS1	80 mm
.60C850SCS1	85 mm
.60C900SCS1	90 mm
.60C950SCS1	95 mm

#### NOTES:

1. INTERPRET DRAWINGS PER 912 DIN STANDARD.
2. DIMENSIONS & TOLERANCES PER ANSI/ASME B18.3.1
3. ROHS AND REACH COMPLIANT



DRAWING SCALE:  METRIC			MATERIAL:  CLASS 12.9 STEEL	DESCRIPTION:  M6 - 1.0 HEX SOCKET CAP SCREW
TOLERANCES: <i>Unless specified otherwise, all dimensions are in inches</i>		x.xxx +/- 0.005 x.xx +/- 0.010 x.x +/- 0.010	FINISH:  PLAIN	PART NUMBER:  .60CXXSCS1
DRAWN BY:	L.CLARY		FSCM No.  67012	<div><div>Global Supply LLC WORLDWIDE SUPPLIER OF ELECTRONIC HARDWARE, FASTENERS &amp; COMPONENTS <small>500 Division Street, Campbell, CA 95008-6906 Tel: 408 960 0370 Fax: 408 960 0375 Web: www.globalsupply.com</small></div></div>
REV:	APPROVAL	DATE:		
INITIAL RELEASE	A	Apr 30, 2018		
			ECCN  EAR99 = NLR (No License Required)	